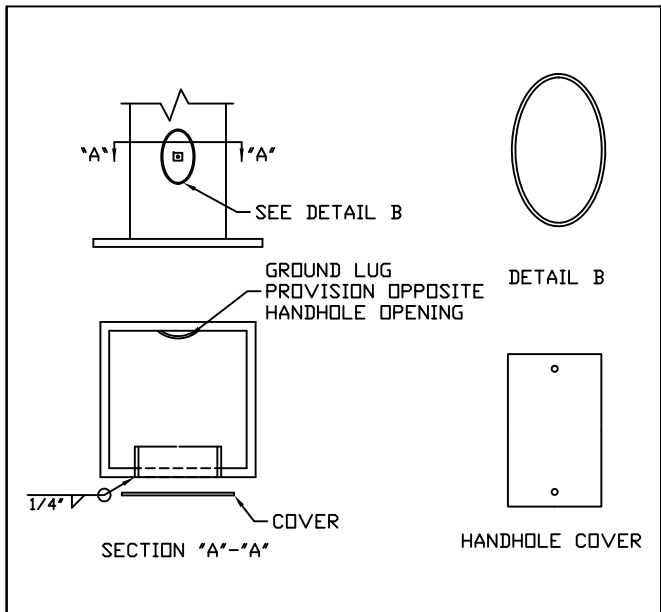
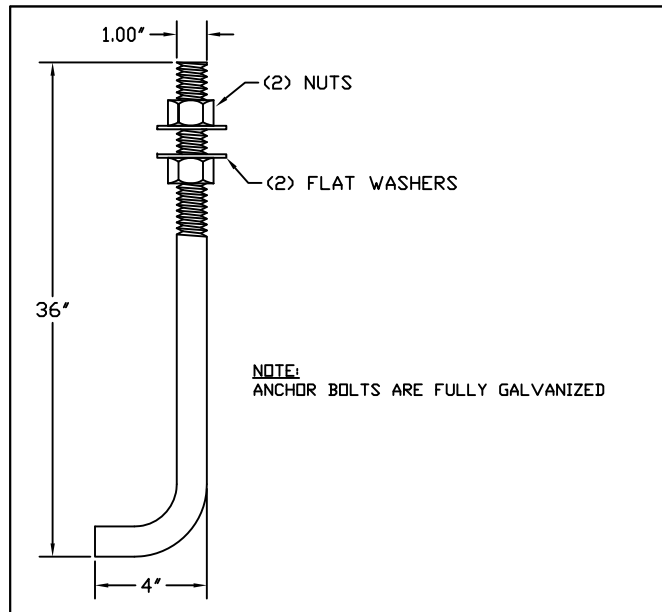


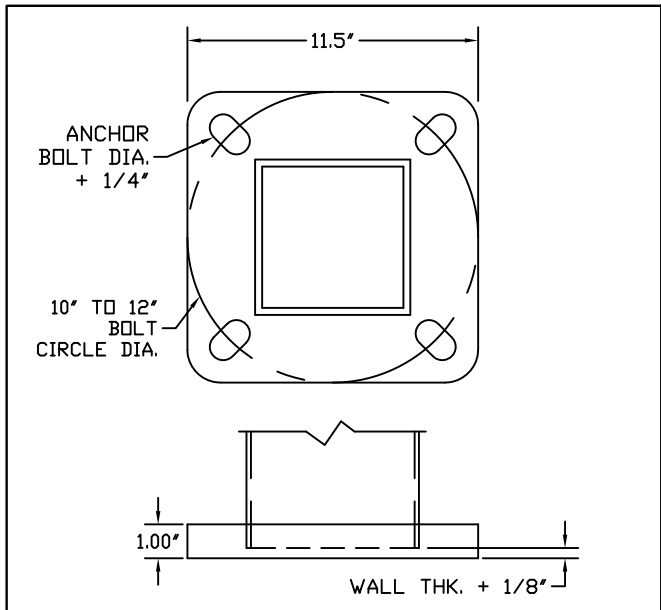
DETAIL 1 POLE ASSEMBLY



DETAIL 3 TYPICAL HANDHOLE



DETAIL 1 ANCHOR BOLTS



DETAIL 4 BASE PLATE

COMPONENT	SPECIFICATION
POLE SHAFT	ASTM A500 GR.B
MISC. STEEL	ASTM A36
ANCHOR BOLTS	ASTM F1554 GR. 55
BASE PLATE	ASTM A36

**GENERAL NOTES:**

1. ALL HARDWARE TO BE GALVANIZED TO ASTM A153.
2. POLE ASSEMBLY TO BE GALVANIZED TO ASTM A123.
3. ALL WELDING TO CONFORM TO AWS D1.1 MOST RECENT EDITION.
4. DESIGN INCORPORATE GUST FACTOR PER REF CODE.
5. REFER TO GENERAL INSTALLATION INSTRUCTIONS PRIOR TO ASSEMBLY.

**FINISH:**  GALVANIZED  PAINTED  PAINTED & GALV

**WIND SPEED:**  80 MPH  90 MPH  100 MPH  110 MPH  120 MPH  \_\_\_ MPH

**DESIGN CRITERIA:**  AASHTO LTS 3  ASCE  AASHTO LTS 6  DSA  IBC  UBC

LOADING DATA			
90 MPH	100 MPH	110 MPH	120 MPH
4 EPA	2 EPA	N/A	N/A
100 LBS	50 LBS	N/A	N/A

DETAIL 2 MATERIAL SPECIFICATIONS



2316 WEAVER ST.  
 HALTOM CITY, TX 76117  
 METRO (817) 834-5538  
 TOLL FREE (866) 724-4527  
 FAX (817) 831-6088

DATE:	REV.:	JOB NO.:	SCALE:
	00	N/A	NTS
DRAWING NUMBER:		DRAWN BY:	QUOTE NUMBER:
MSN3050AB		DR	N/A