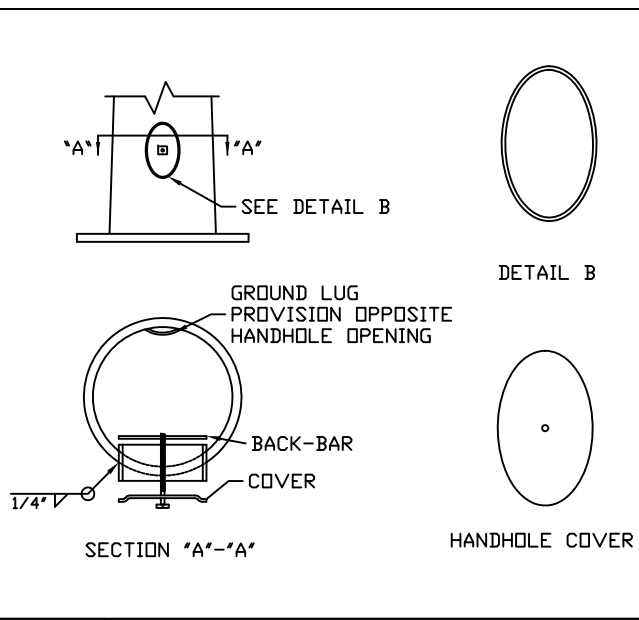
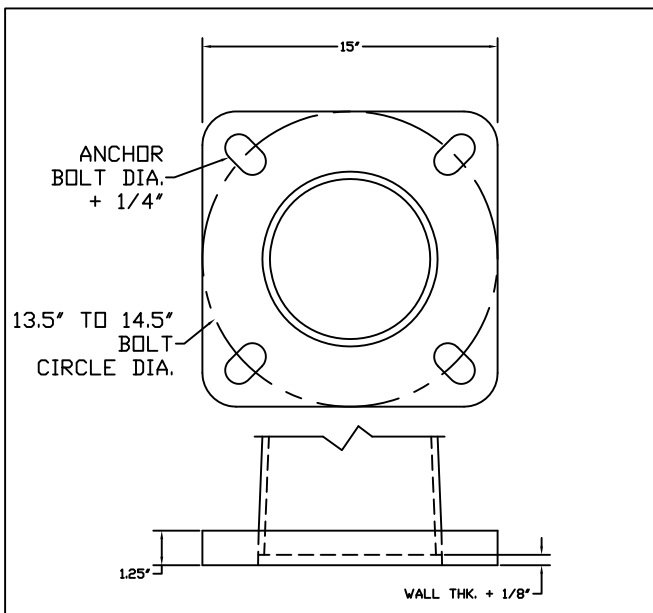


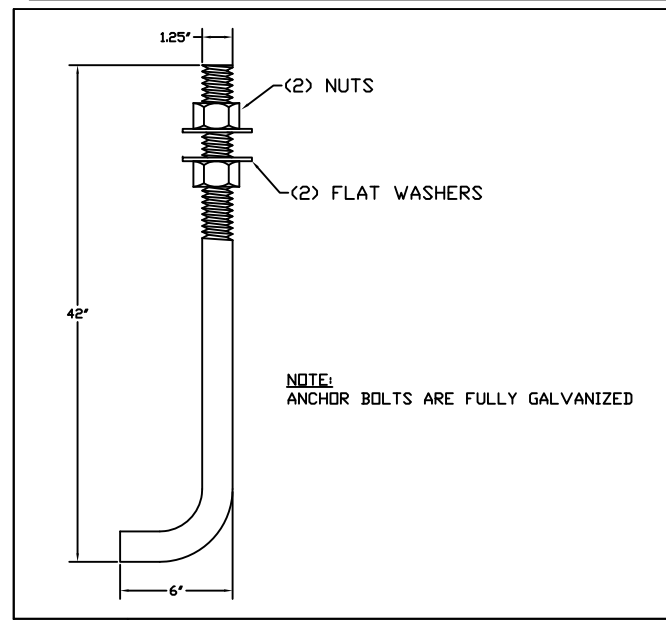
DETAIL POLE ASSEMBLY



DETAIL 3 TYPICAL HANDHOLE



DETAIL 4 BASE PLATE



DETAIL 1 ANCHOR BOLTS

COMPONENT	SPECIFICATION
POLE SHAFT	ASTM A500 GR.B
MISC. STEEL	ASTM A36
ANCHOR BOLTS	ASTM F1554 GR. 55
BASE PLATE	ASTM A36

- GENERAL NOTES:**
- ALL HARDWARE TO BE GALVANIZED TO ASTM A153.
 - POLE ASSEMBLY TO BE GALVANIZED TO ASTM A123.
 - ALL WELDING TO CONFORM TO AWS D1.1 MOST RECENT EDITION.
 - DESIGN INCORPORATE GUST FACTOR PER REF CODE.
 - REFER TO GENERAL INSTALLATION INSTRUCTIONS PRIOR TO ASSEMBLY.
- FINISH:**
- GALVANIZED PAINTED PAINTED & GALV
- WIND SPEED:**
- 80 MPH 90 MPH 100 MPH ___ MPH
- DESIGN CRITERIA:**
- AASHTO LTS 3 ASCE AASHTO LTS 6 DSA IBC UBC

LOADING DATA			
90 MPH	100 MPH	110 MPH	120 MPH
14 EPA	11 EPA	9 EPA	7 EPA
350 LBS	275 LBS	225 LBS	175 LBS

DETAIL 2 MATERIAL SPECIFICATIONS

MSM 2316 WEAVER ST.
 HALTOM CITY, TX 76117
 METRO (817) 834-5538
 Makers Sales and Marketing, LLC TOLL FREE (866) 724-4527
 FAX (817) 831-6088

DATE:	REV.:	JOB NO.:	SCALE:
	00	N/A	NTS
DRAWING NUMBER:		DRAWN BY:	QUOTE NUMBER:
MRT5010AB		DR	N/A