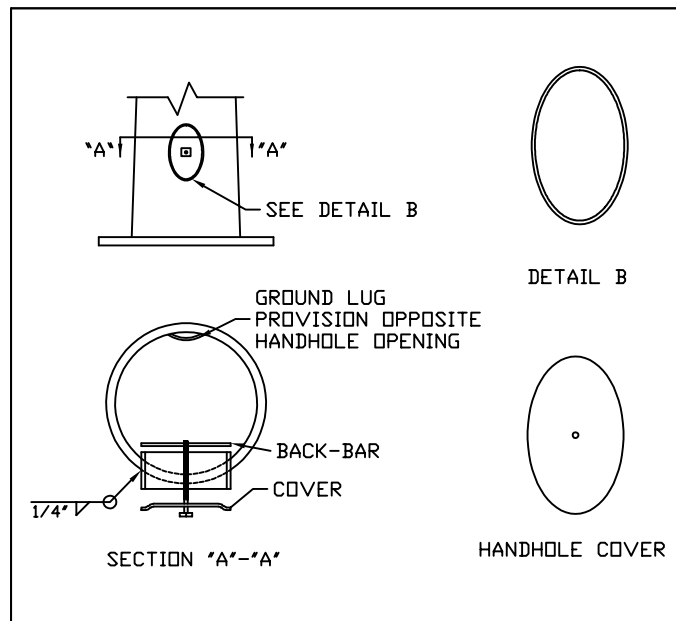
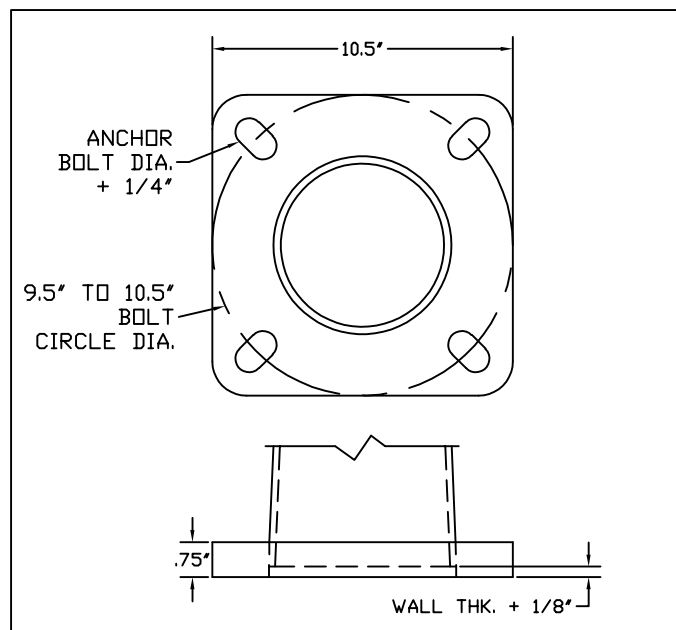


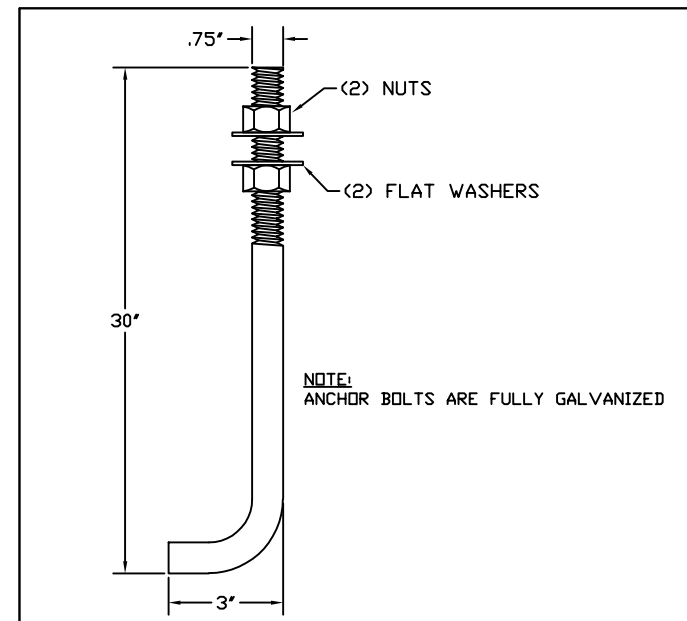
DETAIL POLE ASSEMBLY



DETAIL 3 TYPICAL HANDHOLE



DETAIL 4 BASE PLATE



DETAIL 1 ANCHOR BOLTS

COMPONENT	SPECIFICATION
POLE SHAFT	ASTM A500 GR.B
MISC. STEEL	ASTM A36
ANCHOR BOLTS	ASTM F1554 GR. 55
BASE PLATE	ASTM A36

**GENERAL NOTES:**

- ALL HARDWARE TO BE GALVANIZED TO ASTM A153.
- POLE ASSEMBLY TO BE GALVANIZED TO ASTM A123.
- ALL WELDING TO CONFORM TO AWS D1.1 MOST RECENT EDITION.
- DESIGN INCORPORATE GUST FACTOR PER REF CODE.
- REFER TO GENERAL INSTALLATION INSTRUCTIONS PRIOR TO ASSEMBLY.

**FINISH:**  
 GALVANIZED  
 PAINTED  
 PAINTED & GALV

**WIND SPEED:**  
 80 MPH  
 90 MPH  
 100 MPH  
 110 MPH  
 120 MPH  
 \_\_\_ MPH

**DESIGN CRITERIA:**  
 AASHTO LTS 3  
 AASHTO LTS 6  
 IBC  
 ASCE  
 DSA  
 UBC

LOADING DATA			
90 MPH	100 MPH	110 MPH	120 MPH
24 EPA	19 EPA	15 EPA	13 EPA
600 LBS	475 LBS	375 LBS	325 LBS

DETAIL 2 MATERIAL SPECIFICATIONS

**MSM**  
 Makers Sales and Marketing, LLC

2316 WEAVER ST.  
 HALTOM CITY, TX 76117  
 METRO (817) 834-5538  
 TOLL FREE (866) 724-4527  
 FAX (817) 831-6088

DATE:	REV.:	JOB NO.:	SCALE:
	00	N/A	NTS
DRAWING NUMBER:		DRAWN BY:	QUOTE NUMBER:
MRT2063AB		DR	N/A